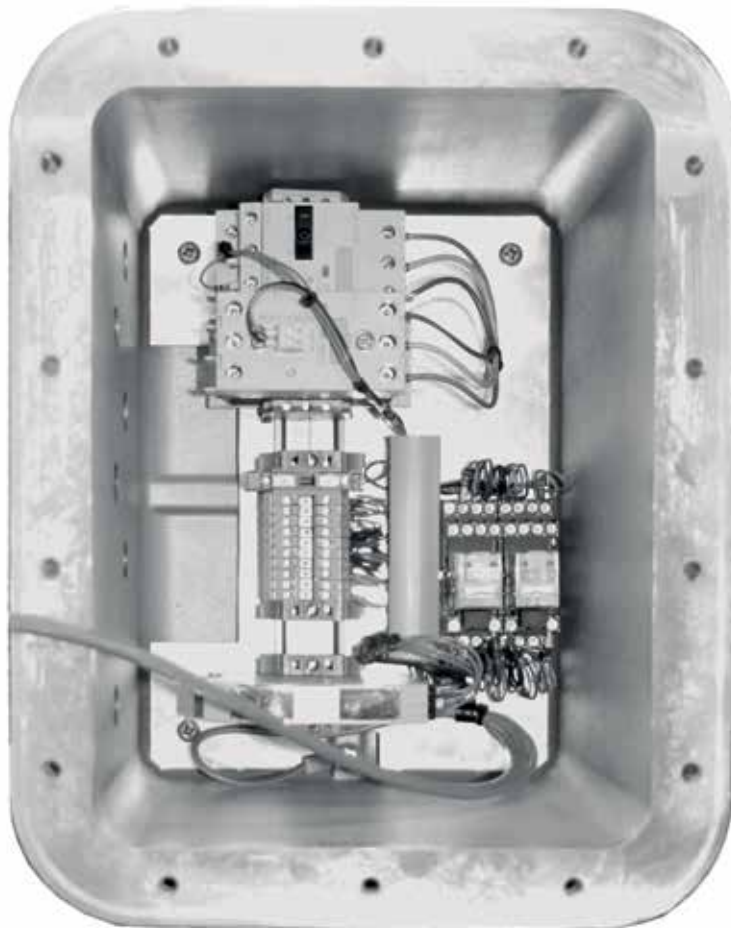


JISKOOT 710 Motor Control Unit



Cameron's JISKOOT™ 710 motor control unit provides motor protection and control facilities for local and remote (automatic) operation of the 710EL-MC cell and the 710EL-MC probe sampler.

In automatic mode, the grab action is initialized by an incoming grab signal from the sampler controller; this in turn switches the main power to the sampler motor, which causes the cell or probe to run its grab rotation.

A feedback signal from a sensor mounted on the sampler detects the completion of the cycle, and power is removed from the motor. The sampler is then at its rest position ready for the grab to be taken.

The unit needs to be initially enabled via a local push button or remote contact; a local lamp will show its readiness. The same indicator is used to show the grab action, switching off during the grab cycle. A pair of contacts can also be used for remote indication.

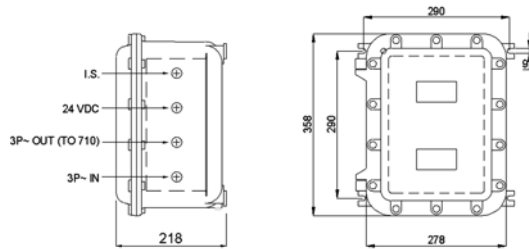
There is a local emergency stop push button and also connections for a remote unit, if required, adjacent to the motor.

A manual push button enables grabs to be taken for test or calibration checks.

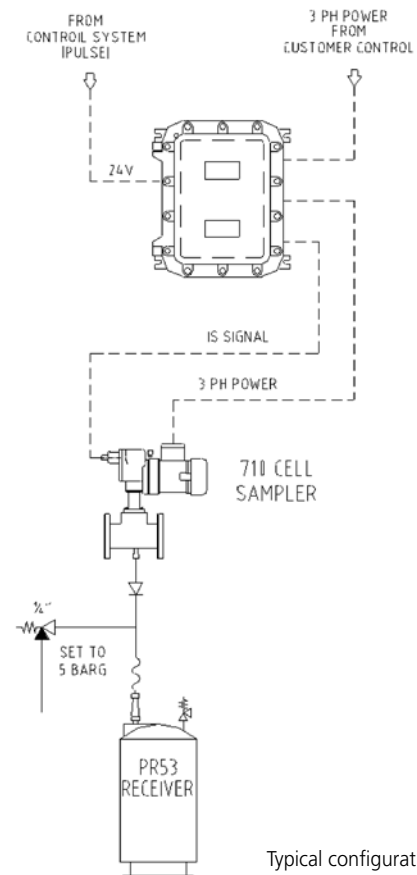
Enclosure Specifications

Material	Copper-free aluminum alloy
Approximate Dimensions	220 mm x 360 mm x 305 mm (H x W x D)
Approximate Weight	12.2 kg
Finish	RAL 7035 epoxy powder coating
Execution	ATEX Ex II 2 GD EEx-d IIB T4/T5 IP65/66
Temperature Limits	-4° F to 104° F (-20° C to 40° C)
Power Requirements (including sampler)	Motor: 600 V maximum 50/60 Hz 3 phase 90 watt maximum Logic: 24 VDC 3 watt
Grab Signal	Volt free 50 ms nominal
Sensor Signal	I.S. Namur

The motor control unit must be supplied via an approved three-phase isolator



Typical sizes



Typical configuration

LOCATIONS

North and South America
14450 JFK Blvd.
Houston, TX 77032
USA
Tel 1 281 582 9500
ms-us@c-a-m.com

Europe, Africa, Caspian, and Russia
JISKOOT Technology Centre
Longfield Road
Tunbridge Wells
Kent, TN2 3EY
United Kingdom
Tel 44 1892 518000
ms-jiskootuksales@c-a-m.com

Asia Pacific
Suite 16.02 Menara AmFirst
No. 1 Jalan 19/3
46300 Petaling Jaya
Selangor Darul Ehsan
Malaysia
Tel 603 7954 0145
ms-kl@c-a-m.com

Middle East
Level 9, Al Jazira Club Tower A
PO Box 47280, Muroor Road
Abu Dhabi
United Arab Emirates
Tel 971 2 596 8400
ms-uk@c-a-m.com