

JISKOOT MARPOL Bunker Sampler



Cameron's JISKOOT™ MARPOL Bunker Sampler is a proven, cost effective automatic sampler for heavy fuel oil and bunkering operations. The sampler is designed to automatically extract four samples simultaneously from a flowing pipeline avoiding the need for manual sampling and sample segregation after the batch is complete.

The sampler is a fully automated flow proportional pneumatically actuated device that complies with the ISO 3171 and API 8.2 sampling standards. The sampler extracts the three independent samples required for bunkering transfers and at the same time a separate MARPOL sample. The four one-liter samples are all extracted into separate sealable sample receivers. This eliminates the problem of sample bias, caused when a larger sample is manually divided by hand into four subsamples at the time of sampling.

This sampler is designed for 3" 300 psi flange installation. It is pneumatically actuated using a control signal from a customer flow computer or from a dedicated Cameron sampler controller which is available separately. The sampler is designed for low air consumption so that it can be operated using a pressurized gas bottle or instrument air.

The MARPOL Bunker Sampler is fully automatic and simply requires a sample grab signal from a suitable controller. It does not require constant operator attendance, adjustment or the presence of an engineer during bunkering. It provides four independent flow proportional samples directly into standard sample receivers mounted inside a lockable, sealed and heated enclosure that is mounted directly onto the sampler.

Specifications

Enclosures

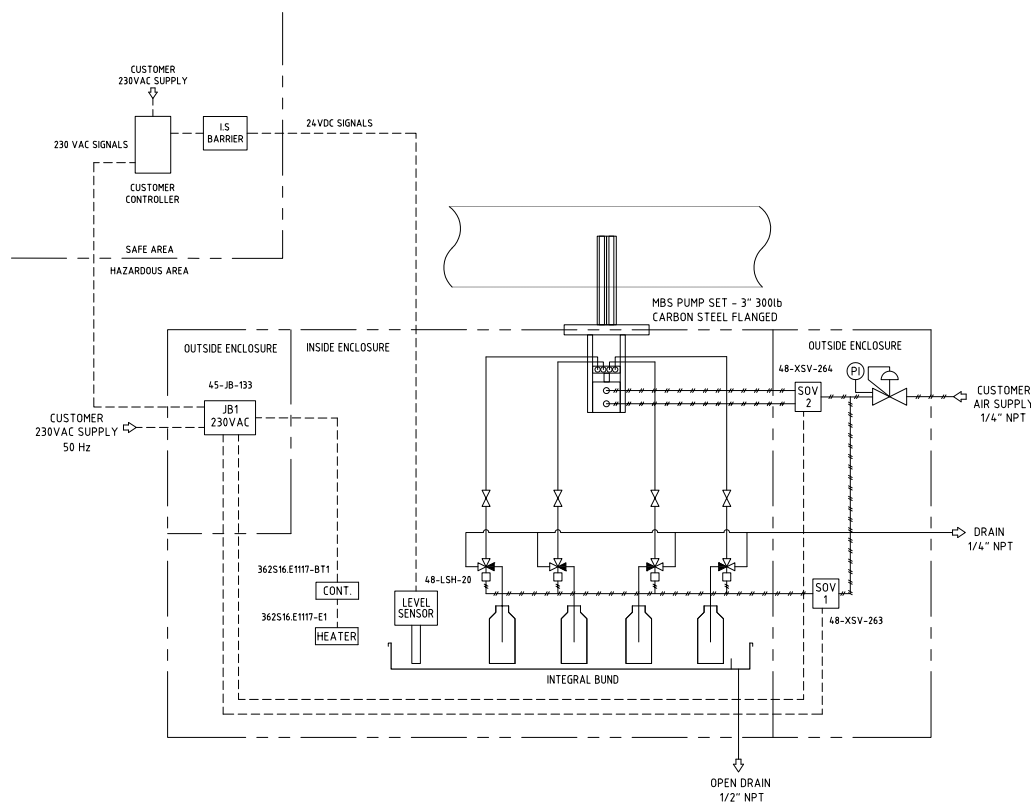
GRP and stainless steel enclosure options available
(Optional - Double glazed and toughened glass window available for stainless steel version)

System

Fluids sampled	Bunker oil
Operating temperature	-4° F to 257° F (-20° C to 125° C)
Maximum operating pressure	Class 300 lb
Configuration	Pipeline mounted probes.
Air inlet connection	1/4" NPTF
Junction box	M20 cable entry
Heater junction box	M20 cable entry
Standard wetted materials	316 Stainless steel
Explosion protection	ATEX 94/9/EC certified Group II 2 G T3 at 158° F (70° C)
Ambient temperature range	40° F to 140° F (-40° C to 60° C)

Mounting Details Sampler

Dimensions of sampler housing	700 mm x 640 mm x 550 mm (w x h x d)
Heating system	115 V/230 V AC 1Ph ± 10% 50/60 Hz (500 Watt)
Solenoid coil	24 VDC or 110/240 VAC 50/60 Hz
Air supply	87 to 145 psi (6 to 10 bar)



LOCATIONS

North and South America

14450 JFK Blvd.
Houston, TX 77032
USA
Tel 1 281 582 9500
ms-us@c-a-m.com

Europe, Africa, Caspian and Russia

JISKOOT Technology Centre
Longfield Road
Tunbridge Wells
Kent, TN2 3EY
United Kingdom
Tel 44 1892 518000
ms-jiskootuksales@c-a-m.com

Asia Pacific

Suite 16.02 Menara AmFirst
No. 1 Jalan 19/3
46300 Petaling Jaya
Selangor Darul Ehsan
Malaysia
Tel 603 7954 0145
ms-kl@c-a-m.com

Middle East

Level 9, Al Jazira Club Tower A
PO Box 47280, Muroor Road
Abu Dhabi
United Arab Emirates
Tel 971 2 596 8400
ms-uk@c-a-m.com

OTHER LOCATIONS

ALGERIA	RUSSIA
CANADA	UAE
CHINA	UK
INDIA	USA
MALAYSIA	

www.c-a-m.com/measurement