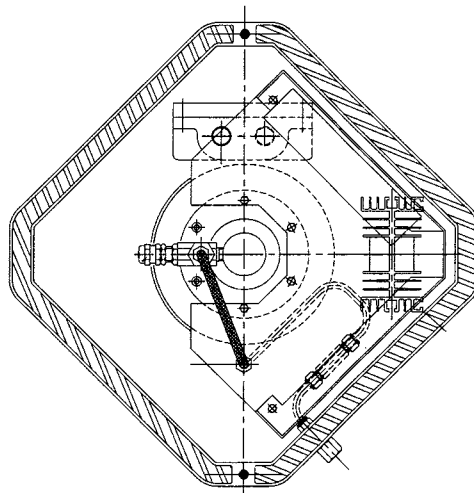
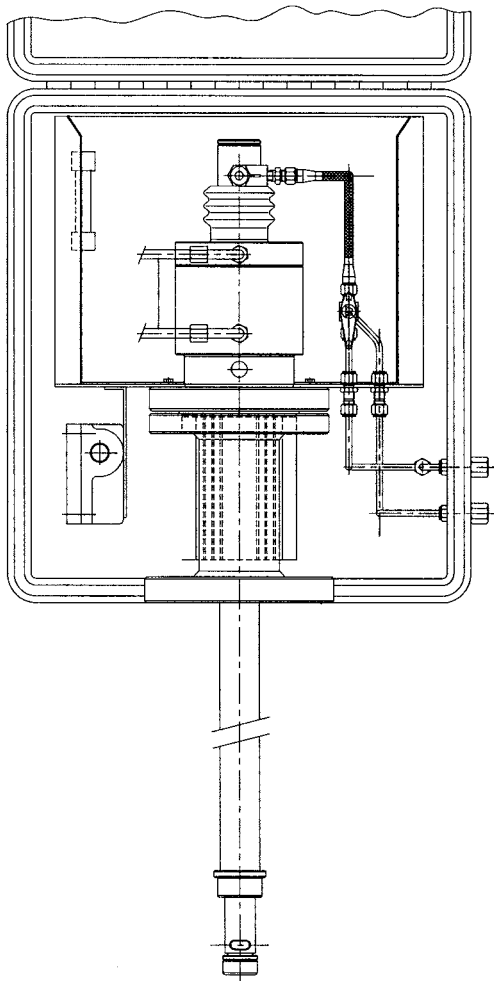


## JISKOOT Probe Sampler Weatherproof Housing

Cameron's JISKOOT™ probe sampler weatherproof housing is a GRP protective top box designed to house the actuator/electric motor of the sampler and all the required ancillaries, such as an in-line check valve, solenoid valve, coil and junction box, flexible hose, 1/4" stainless steel tube, and fittings.

Also available is a 100 watt anti-frost/anti-condensation heater and a fused junction box. If waxing is considered to be a problem, then a larger capacity heater can be added to the housing upon request.

Note: The lid of the sampler weatherproof housing must be kept closed at all times except when undertaking maintenance.



## Specifications

### Enclosures

Ingress Protection (Equipment only)	210/710P 710EL	IP65 IP55	Depending upon selected options
Dimensions	210/710P (pneumatic) sampler housing 710EL (electric) sampler housing Weight	400 mm x 450 mm x 400 mm (W x H x D) 700 mm x 450 mm x 400 mm (W x H x D) 25 kg	
Connections	Air inlet Sample outlet Solenoid coil junction Heater junction box	1/4" NPT female 1/4" NPT female M20 cable entry M20 cable entry	

### Utilities

Heating System	115 V/230 VAC 1Ph ± 10%	50/60 Hz (100 watts)
----------------	-------------------------	----------------------

### Actuation Data 710EL

Actuation Method	Motor driven
Motor Supply	440 VAC – 50/60 Hz three phase (ATEX only)
Consumption	60 watt nominal
Hazardous Area Certification	ATEX EExd IIB T4
Solenoid Coil	24 VDC (22 watts) 115 VAC/230 VAC ± 10% – 50/60 Hz (8 watts)
Actuation Signal	250 ms pulse, maximum

### Actuation Data 210P

	210P Probe	210P-HP Probe
Actuation Method	Pneumatic	Pneumatic
Air Supply Range	60 to 145 psi* / 4 to 10 bar (Lubricated air recommended)	60 to 145 psi* / 4 to 10 bar (Lubricated air recommended)
Air Consumption (30 grabs/min)	0.47 ft <sup>3</sup> /min [CFM]-(0.8m <sup>3</sup> /hr) at 5 bar*	1.0 ft <sup>3</sup> /min [CFM]-(1.67m <sup>3</sup> /hr) at 5 bar*
Actuator Connections	2 x 1/4" NPT female	2 x 1/4" NPT female
Actuation Signal	250 ms pulse, minimum	250 ms pulse, minimum

\* Maximum grab rate, consumption, and supply requirements are dependant on process conditions, i.e., line pressure and fluid viscosity

#### LOCATIONS

##### North and South America

14450 JFK Blvd.  
Houston, TX 77032  
USA  
Tel 1 281 582 9500  
ms-us@c-a-m.com

##### Europe, Africa, Caspian, and Russia

JISKOOT Technology Centre  
Longfield Road  
Turnbridge Wells  
Kent, TN2 3EY  
United Kingdom  
Tel 44 1892 518000  
ms-jiskootuksales@c-a-m.com

##### Asia Pacific

Suite 16.02 Menara AmFirst  
No. 1 Jalan 19/3  
46300 Petaling Jaya  
Selangor Darul Ehsan  
Malaysia  
Tel 603 7954 0145  
ms-kl@c-a-m.com

##### Middle East

Level 9, Al Jazira Club Tower A  
PO Box 47280, Muroor Road  
Abu Dhabi  
United Arab Emirates  
Tel 971 2 596 8400  
ms-uk@c-a-m.com